

TECHNICAL SPECIFICATION

Bulkhead Connectors

Product Description

Principle of Operation

Performance

Product Variations

Construction

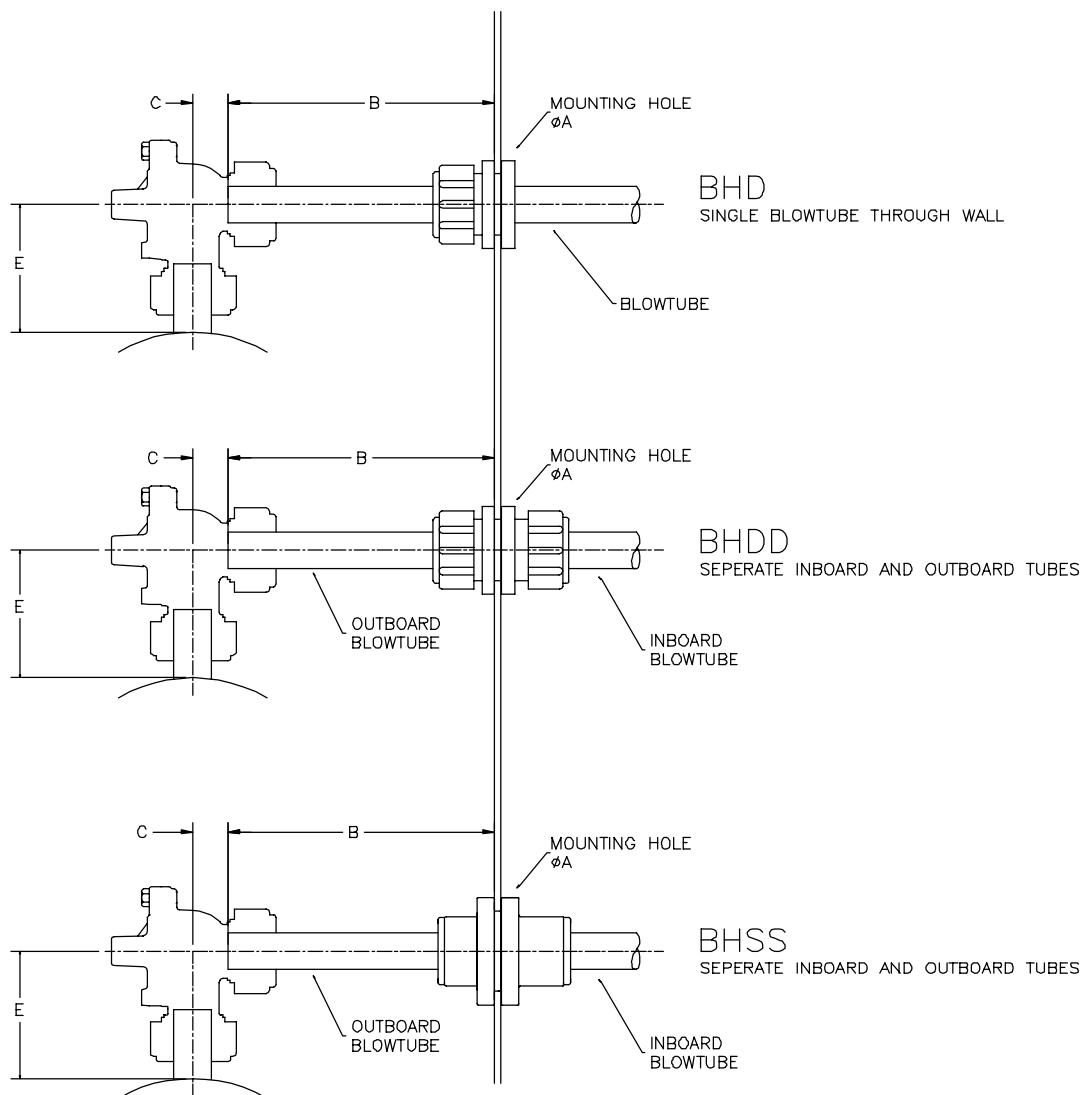
How to Order

PRODUCT DESCRIPTION

These bulkhead connectors are designed to suit American National Standard Schedule 40 wrought steel pipe, commonly used for blowtubes within reverse pulse filters.

Typical Applications

The bulkhead connector is mounted to the external baghouse wall. The double dresser (BHDD) or slide seal design (BHSS) bulkhead allows two pipe segments to be abutted at the baghouse wall. Alternatively, a single pipe may be passed through the wall in an air tight manner using the single dresser (BHD) arrangement.



Dimensional Details

Please refer to the Operating Guide.

PRINCIPLE OF OPERATION

Functionality

Bulkhead connectors are primarily used to allow ease of fitment of blowtubes to the dust collector valve outlets through the baghouse walls.

PERFORMANCE

Pressure Rating

Maximum Working Pressure:	860 kPa (125 psi)
Recommended Working Pressure:	760 kPa (110 psi)
Maximum Negative Pressure:	2500 Pa (10" Wg)

Temperature Rating

Working Temperature Range:	-40°C to 80°C (-40°F to 176°F)
----------------------------	--------------------------------

Fluid Media

Dry air or inert gas

Unit Weight

Product Code	Unit Weight Kg (lbs)
BH20DD	0.41 (0.90)
BH25DD	0.66 (1.46)
BH40DD	1.16 (2.56)
BH20D	0.27 (0.60)
BH25D	0.40 (0.88)
BH40D	0.76 (1.68)
BH25SS	0.53 (1.17)
BH45SS	0.85 (1.87)

PRODUCT VARIATIONS

Diaphragms and Seals

Dresser seals	Standard High Temperature	Buna N Viton
Slide seals	Standard High Temperature	EMDM Viton

Connection Types

20 (3/4"), 25 (1") and 40 (1 1/2") sized product accept schedule 40 wrought steel pipe.

BH20DD, BH20D	Pipe Ø26.67 mm (1.050")
BH25DD, BH25D & BH25SS	Pipe Ø33.40 mm (1.315")
BH40DD, BH40D & BH45SS	Pipe Ø48.26 mm (1.900")

CONSTRUCTION

Body

Standard Bulkhead	Pressure Die Cast Aluminium	CA313
	Specification standards:	
	Australia	CA313
	British	LM24
	European	AlSi8Cu3Fe
	AL Association Alloy	A380.0
Stainless steel option		
BHS25SS,BHS45SS	Stainless Steel 316	

HOW TO ORDER

Product Code	Descriptions
BH20D	20 mm (3/4") Pipe - Buna Seals - Single Dresser
BH20DD	20 mm (3/4") Pipe - Buna Seals - Double Dresser
BH20D-V	20 mm (3/4") Pipe - Viton Seals - Single Dresser
BH20DD-V	20 mm (3/4") Pipe - Viton Seals - Double Dresser
BH25D	25 mm (1") Pipe - Buna Seals - Single Dresser
BH25DD	25 mm (1") Pipe - Buna Seals - Double Dresser
BH25D-V	25 mm (1") Pipe - Viton Seals - Single Dresser
BH25DD-V	25 mm (1") Pipe - Viton Seals - Double Dresser
BH25SS	25 mm (1") Pipe - Buna Seals - AL Slide Coupling
BH25SS-V	25 mm (1") Pipe - Viton Seals - AL Slide Coupling
BHS25SS	25 mm (1") Pipe - Buna Seals - SS Slide Coupling
BHS25SS-V	25 mm (1") Pipe - Viton Seals - SS Slide Coupling
BH40D	40 mm (1 1/2") Pipe - Buna Seals - Single Dresser
BH40DD	40 mm (1 1/2") Pipe - Buna Seals - Double Dresser
BH40D-V	40 mm (1 1/2") Pipe - Viton Seals - Single Dresser
BH40DD-V	40 mm (1 1/2") Pipe - Viton Seals - Double Dresser
BH45SS	40 mm (1 1/2") Pipe - Buna Seals - AL Slide Coupling
BH45SS-V	40 mm (1 1/2") Pipe - Viton Seals - AL Slide Coupling
BHS45SS	40 mm (1 1/2") Pipe - Buna Seals - SS Slide Coupling
BHS45SS-V	40 mm (1 1/2") Pipe - Viton Seals - SS Slide Coupling