

# TECHNICAL SPECIFICATION

## *Bulkhead Compression Fittings – PTD and PTS*



**Product Description**



**Construction**



**Dimensional Details**



## PRODUCT DESCRIPTION

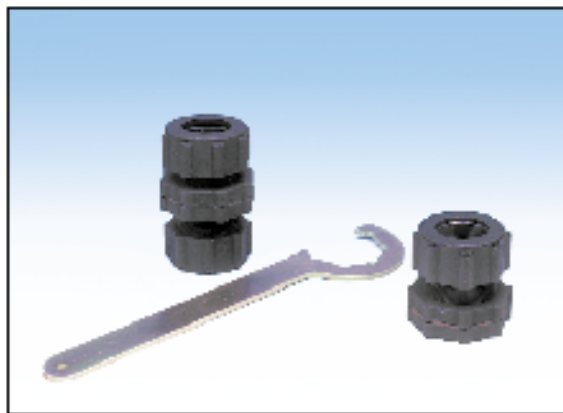
The bulkhead fittings connect the valve to the blow tube through the wall of the filter. An important saving of time and material is allowed by the quickness of the connection to a non threaded blow tube with no need for welding or use of additional fittings.

Two versions of the bulkhead compression fittings are available:

- PTD: two piece tube connection fittings,
- PTS: through tube connection fittings.

Use smooth non threaded pipes for connecting the header tank and filter blow tubes to the valve. Then tighten the quick fit connections with the proper size CH wrench (for nut rings) and PH (for bolts).

**Note:** these fittings have been designed only for the pneumatic seal, not for the mechanical support of the tank.



## **CONSTRUCTION**

### **Body**

Anodized die-cast aluminium

### **Gaskets**

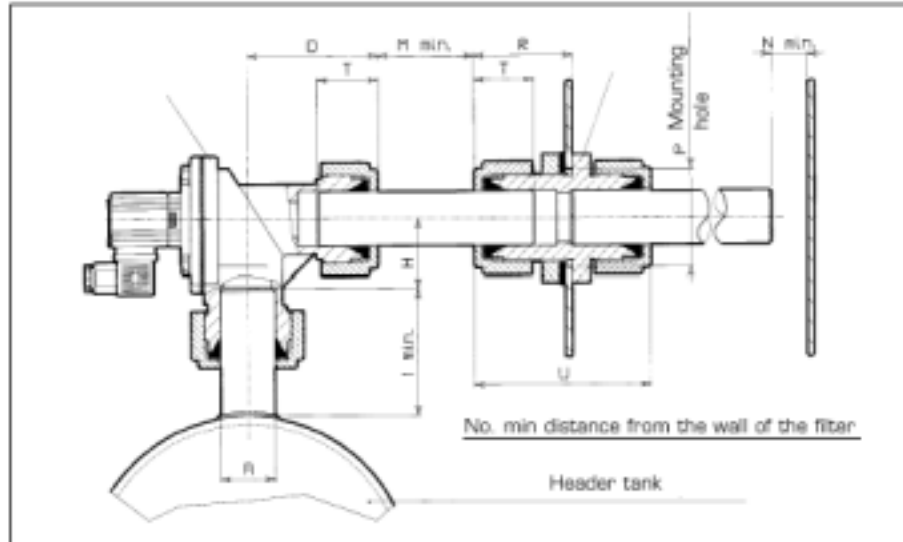
NBR -30°C/+100°C

Silicone -60°C/+200°C



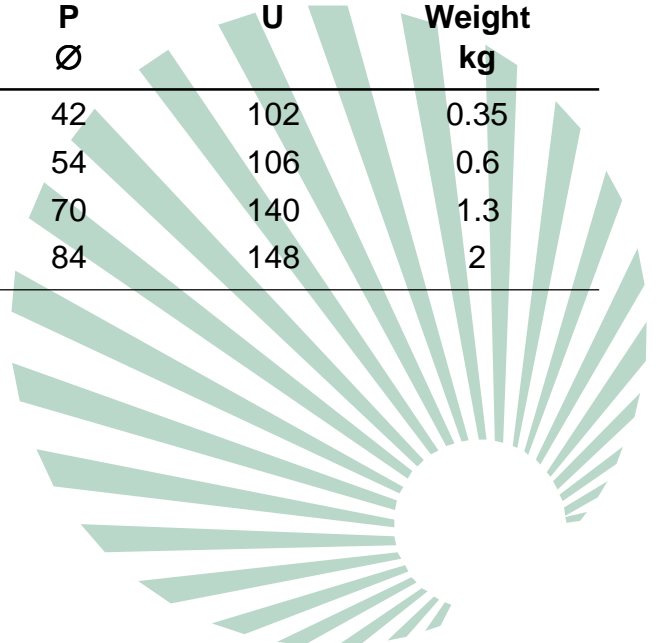
## DIMENSIONAL DETAILS

### PTD Assembling Layout Over Two Piece Tube

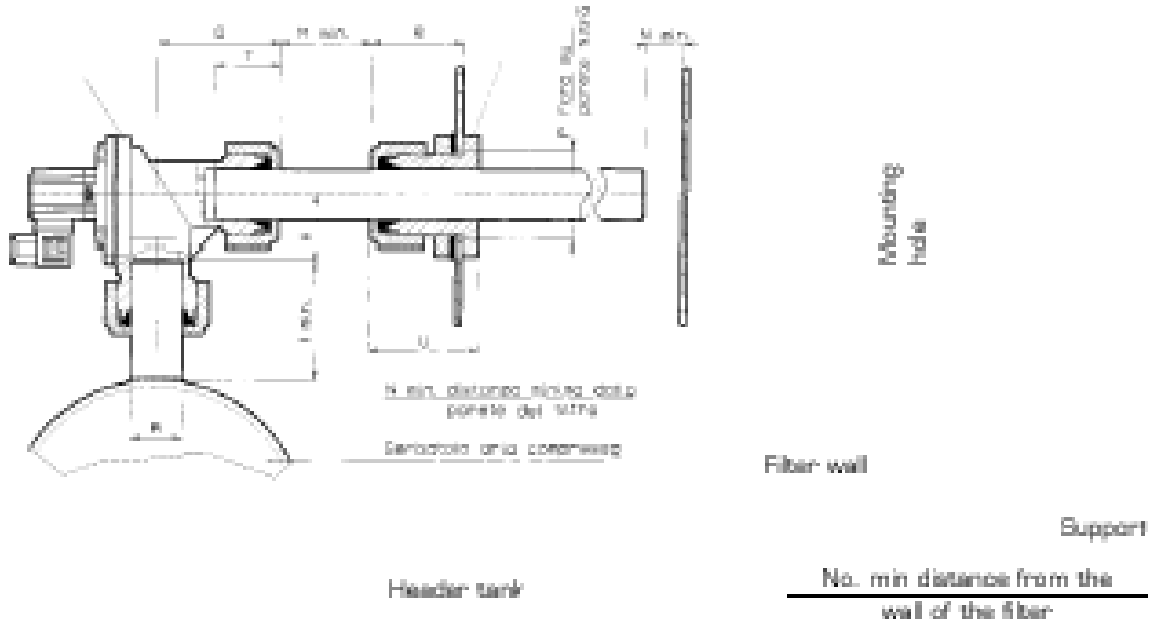


Type	A Ø	D	H	I	M	N	T	Weight kg
VEP306	3/4"	67	40	50	56	48	30	0.9
VEP308	1"	80	48	60	70	50	36	1.2
VEP 314	1 1/2"	99	53	85	80	54	42	2.3

Type	A Ø	R	P Ø	U	Weight kg
PTD306	3/4"	51	42	102	0.35
PTD308	1"	55	54	106	0.6
PTD314	1 1/2"	74	70	140	1.3
PTD316	2"	77	84	148	2

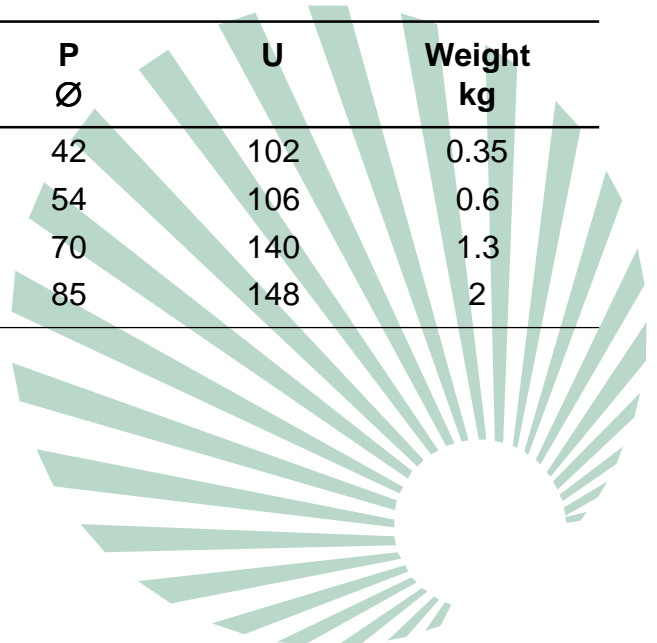


## PTD Assembling Layout over "Full Immersion" Tank

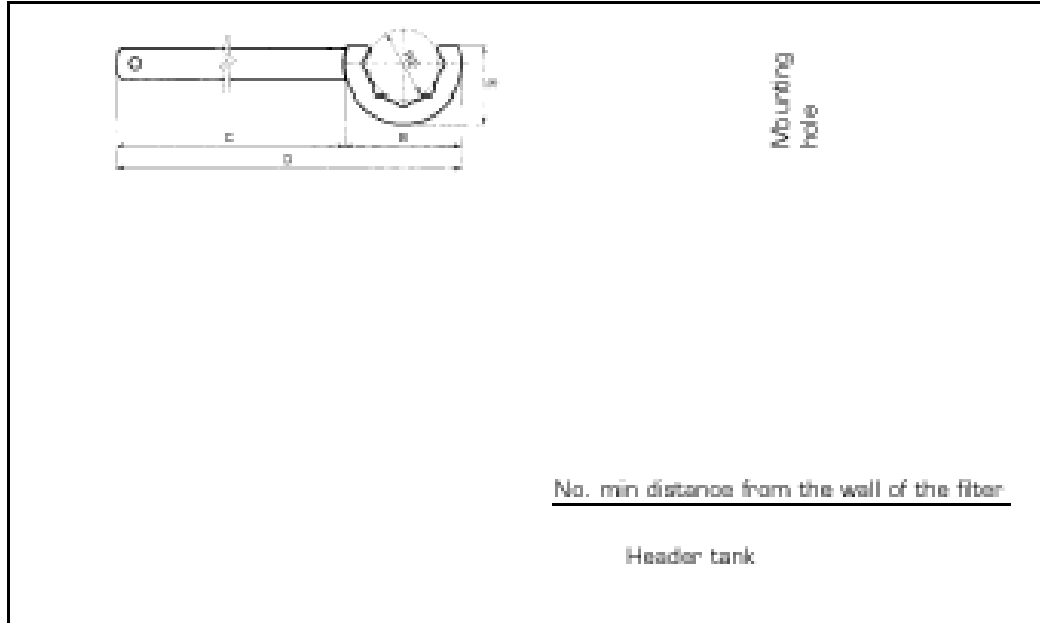


Type	A Ø	D	M	N	T	Weight kg
VEP506	3/4"	92	56	48	30	0.9
VEP508	1"	106	70	50	36	1.2
VEP 512+514	1 1/2"	151	80	54	42	2.3
VEP516	2"	138	90	60	42	2.8

Type	A Ø	R	P Ø	U	Weight kg
PTD306	3/4"	51	42	102	0.35
PTD308	1"	55	54	106	0.6
PTD314	1 1/2"	74	70	140	1.3
PTD316	2"	77	85	148	2

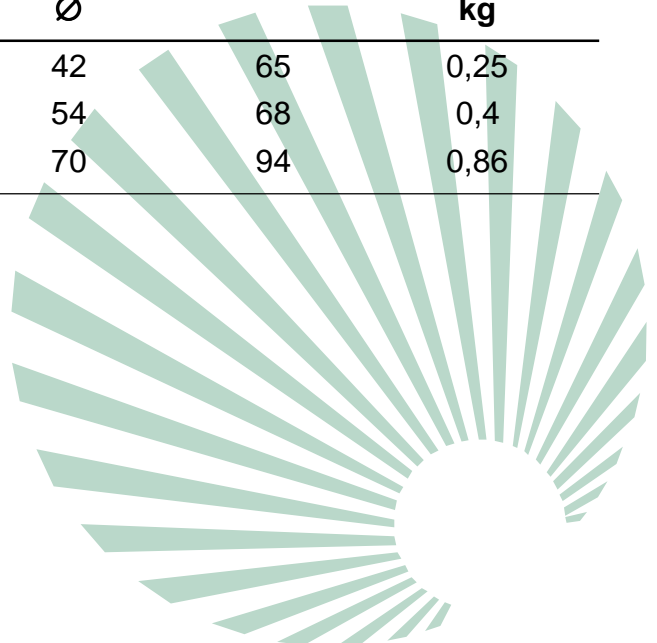


## PTS Assembling Layout Over Through Tube

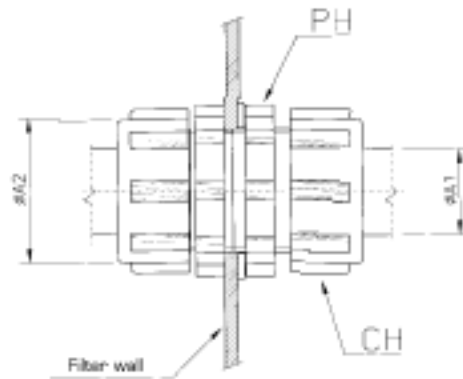


Type	A Ø	D	H	I	M	N	T	Weight kg
VEP306	3/4"	67	40	50	56	48	30	0,9
VEP308	1"	80	48	60	70	50	36	1,2
VEP314	1 1/2"	99	53	85	80	54	42	2,3

Type	A Ø	R	P Ø	U	Weight kg
PTS306	3/4"	51	42	65	0,25
PTS308	1"	55	54	68	0,4
PTS314	1 1/2"	74	70	94	0,86

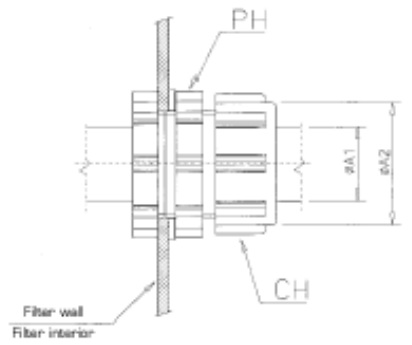


### PTD

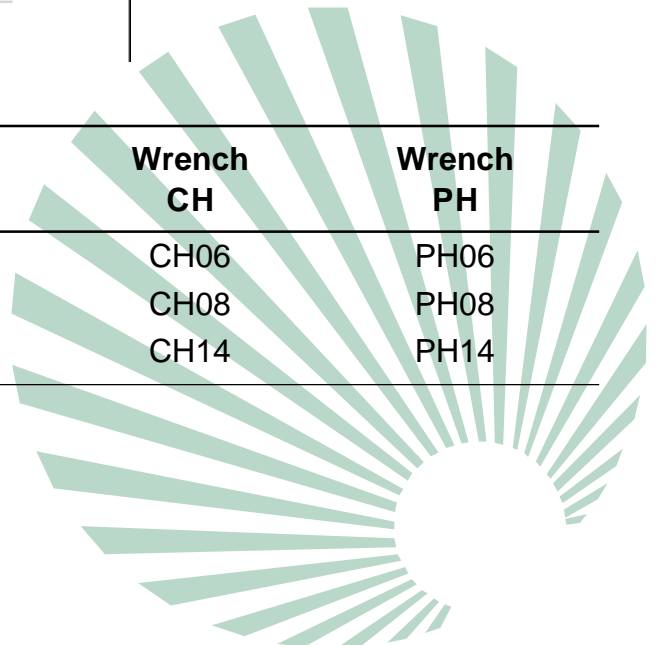


Model	A1 Ø	A2 Ø	Wrench CH	Wrench PH
PTD306	3/4"	48	CH06	PH06
PTD308	1"	61	CH08	PH08
PTD314	1 1/2"	82	CH14	PH14
PTD316	2"	95	CH16	PH16

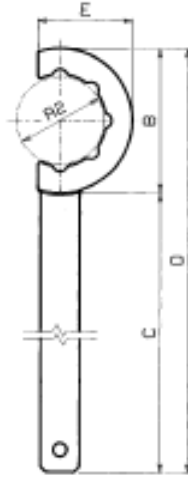
### PTS



Model	A1 Ø	A2 Ø	Wrench CH	Wrench PH
PTD306	3/4"	48	CH06	PH06
PTD308	1"	61	CH08	PH08
PTD314	1 1/2"	82	CH14	PH14



## Assembling CH and PH Wrenches



### CH Wrench for Ring Nut Tightening

Type	A1 Ø	A2 Ø	B Ø	C	D	E	Weight kg
CH06	3/4"	48	80	200	280	55	0.24
CH08	1"	61	100	250	350	68	0.44
CH14	1 1/2"	82	130	300	430	85	0.7
CH16	2"	95	150	350	500	100	0.78
CH20	2 1/2"	115	170	350	520	110	0.8
CH24	3"	128	190	350	540	120	0.9

### PH Wrench for Bolts Tightening

Type	A1 Ø	A2 Ø	B Ø	C	D	E	Weight kg
PH06	3/4"	55	80	200	280	55	0.24
PH08	1"	70	100	260	360	65	0.31
PH14	1 1/2"	90	130	270	400	85	0.5
PH16	2"	95	150	350	500	100	0.78