

TECHNICAL SPECIFICATION

Diverter Block – N18



Performance



Construction



How to Order



Dimensional Details



PERFORMANCE

Port Size	BSPP-G (ISO228)	1/2
Flow Capacity*	1/2	400 scfm (189 dm ³ /s)
Maximum Operating Temperature	150°F (65,5°C)	
Maximum Supply Pressure	300 psig (20,7 bar)	
Auxiliary Port (2)	BSPP-G	3/8
Weight	lb (kg)	0.261 (0,346)

* Inlet pressure 150 psig (10,3 bar). Pressure drop 5 psid (0,3 bar).



CONSTRUCTION

Body

Aluminium

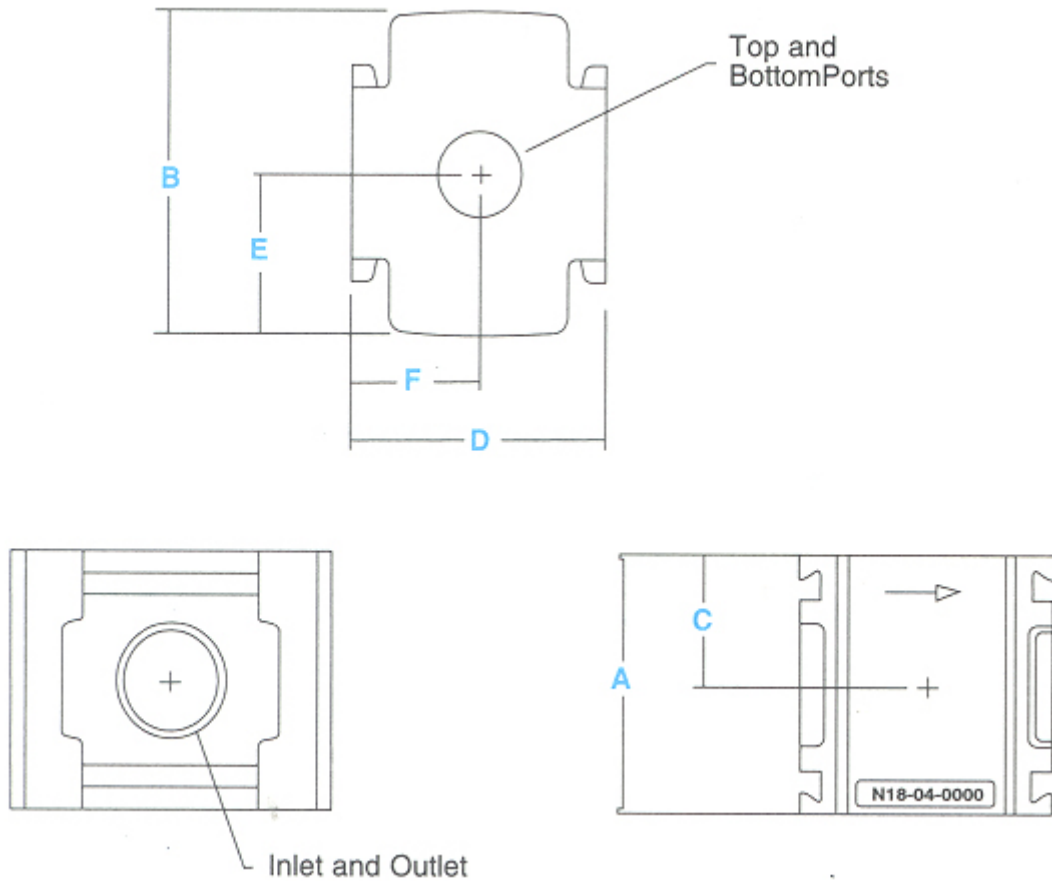


HOW TO ORDER

Model Type	In/Out Port Size	Auxiliary Port Size	Model
N18 - Standard	1/2	3/8	N18-C4-0000
N18 - with Check Valve	1/2	3/8	N18-C4-C000



DIMENSIONAL DETAILS



Models	A mm (inches)	B mm (inches)	C mm (inches)	D mm (inches)	E mm (inches)	F mm (inches)
Standard Unit N18-XX-0000	48 (1.88)	60 (2.36)	24 (0.94)	48 (1.88)	30 (1.18)	24 (0.94)

