

TECHNICAL SPECIFICATION

Diverter Block – N08



Performance



Construction



How to Order



Dimensional Details



PERFORMANCE

Port Size	BSPP-G (ISO228)	1/8, 1/4
Flow Capacity*	1/4	133 scfm (62,7 dm ³ /s)
Maximum Operating Temperature	150°F (65,5°C)	
Maximum Supply Pressure	300 psig (20,7 bar)	
Weight	lb (kg)	0.66 (0,3)

* Inlet pressure 150 psig (10,3 bar). Pressure drop 5 psid (0,3 bar).



CONSTRUCTION

Body

Zinc

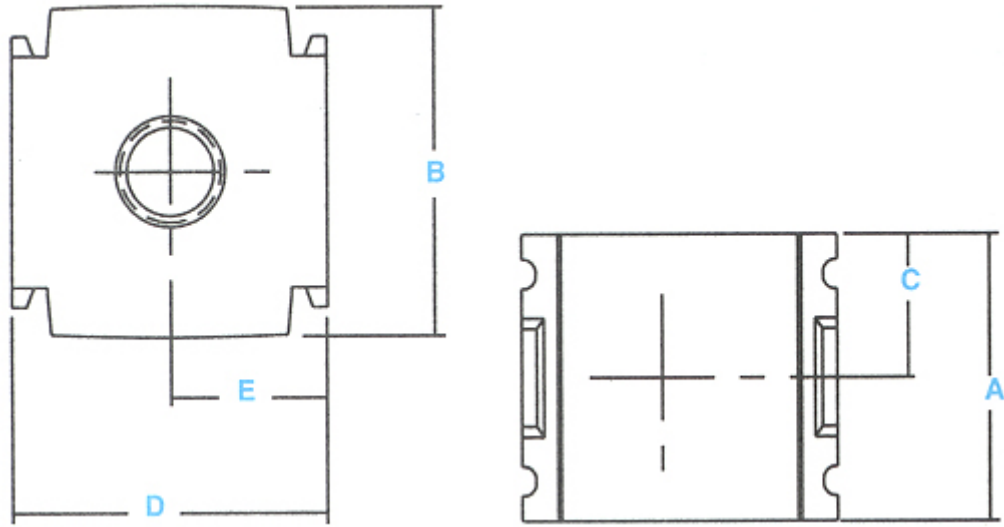


HOW TO ORDER

Model Type	In/Out Port Size	Auxiliary Port Size	Model
N08 - Standard	1/8	1/8	N08-C1-0000
	1/4	1/4	N08-C2-0000
N08 - with Check Valve	1/8	1/8	N08-C1-C000
	1/4	1/4	N08-C2-C000



DIMENSIONAL DETAILS



Models	A mm (inches)	B mm (inches)	C mm (inches)	D mm (inches)	E mm (inches)
Standard Unit N08-XX-0000	36 (1.42)	42 (1.64)	18 (0.71)	40 (1.58)	22 (0.88)

